

Changing Patient Rule Sets

Quick Reference Guide



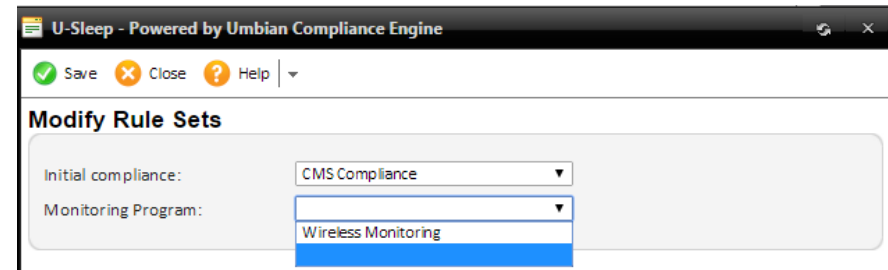
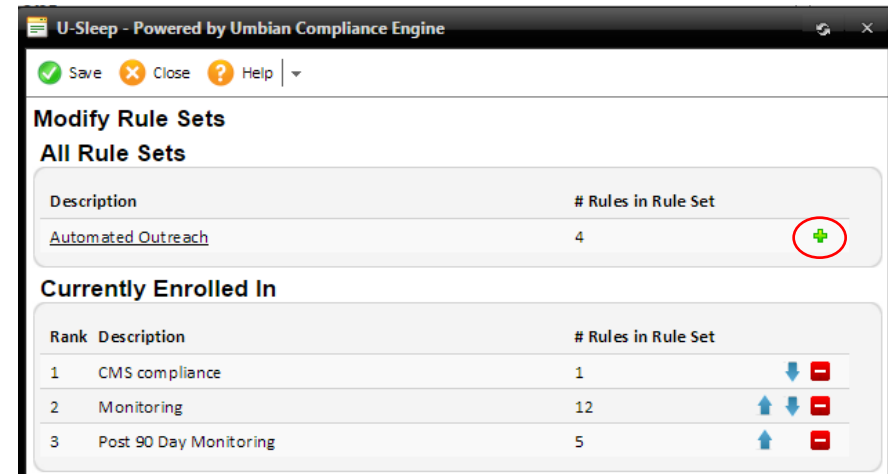
Why?

Perform this procedure if:

- A patient was not enrolled in rule sets when they were created in U-Sleep™.
- A patient was accidentally enrolled in an incorrect rule set.
- You want to change the rule set that the patient is enrolled in.

How?

- 1 Sign in to U-Sleep.
- 2 Click the **People** tab.
- 3 Search for the patient whose rule sets you want to edit.
- 4 Click the **Enrollment** tab.
- 5 Click **Edit**.
- 6 Click **Modify Enrollment**.
- 7 Depending on your setup, do one of the following:
 - Click the plus sign (+) to add the patient to a rule set, or click the minus sign (-) to remove the rule set from the patient.
- OR
 - Use the drop-down lists to change the selection.
Note: Choose the blank option to remove the rule set from the patient.
- 8 Click **Save** to confirm changes.



Distributed by ResMed Halifax, ResMed 38 Solutions Dr., Halifax, NS B3S 0H1 Canada +1 (877) 242 1703 Ext 369235. See www.resmed.com for other ResMed locations worldwide. U-Sleep is a trademark and/or registered trademark of the ResMed family of companies. © 2016 ResMed. RH-102010/1 2016-04

U-Sleep Support

support@u-sleep.com | 1-800-424-0737

