



Your guide to easy software installation for the S9 VPAP Tx Lab System

This guide provides you with simple steps on how to successfully install the EasyCare Tx titration software for the ResMed S9™ VPAP™ Tx Lab System. With its user-friendly interface and comprehensive help menu, you can easily learn and train your staff. Follow these instructions to connect the software to the therapy device's flow generator.

Table of contents

Prepare	Page 2
Install and Configure.....	Page 3
Connect and Go.....	Page 6

Prepare

Minimum requirements

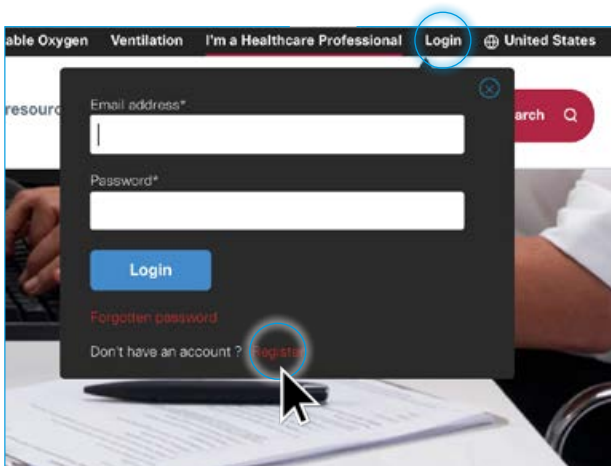
Verify the following hardware and software requirements are met before installing EasyCare Tx titration software.

HARDWARE REQUIREMENTS	
PC	1 GHz or greater
Memory	1 GB RAM or greater for 32-bit Windows® 1 GB RAM or greater for 64-bit Windows
Screen resolution	1024 x 768 (or higher)
Operating systems	Microsoft® Windows 7, Windows 8.1, Windows 10
Network speed	10/100 Mbps
Free space on hard drives	100 MB
SOFTWARE REQUIREMENTS	
.NET Framework 2.0 from Microsoft	
Microsoft Internet Explorer 6.0 or above	
A portable document reader (e.g. Adobe® Reader®)	

S9 VPAP Tx Lab System (PN 36000) components

- Tx Link – 25101
- S9 VPAP Tx – 36010
- H5i cleanable tub – 36800
- ClimateLine tubing – 36995
- EasyCare Tx Version 9.0 – 25945*
- USB Over CAT5 Adapter – 25926
- USB Ethernet Adapter – 25923
- Cable 10ft CAT5 – 25924
- RJ-45 female-to-female adapter – 22955
- CABLE-PSG 3.5-2.5mm Mono 1M2 (6-pk) – 25913
- CABLE-PSG 3.5mm Mono-St 1M2 (3-pk) – 25914
- CABLE-PSG 4P4C-4P4C PLUG 1M2 (3-pk) – 25916
- CABLE-PSG 3.5mm Mono 1M2 (6-pk) – 25912

Note: A USB-to-Serial cable is necessary for configuring the Tx Link and must be locally sourced by a lab or end user.



* For optimal system performance, download the latest version of EasyCare Tx at: ResMed.com.

Note: You must log in or register as a Healthcare Professional who needs clinical content to download the titration software.

Install and Configure

The EasyCare Tx installation wizard

Here's how to access the EasyCare Tx installation wizard to help guide you through the installation process:

- Sign in to a PC with an Administrator account.
Note: You **MUST** have administrative privileges to install the software and access the online tutorial.
- Close all other applications on your computer.
- Extract the ZIP file from your **Downloads** folder and double-click on the **EasyCare Tx** setup file.



Setting up environment variables

On Microsoft Windows, you must be an administrator to create or modify environment variables. Here's how to enable network discovery for a public profile from the control panel of your computer:

Go to **Windows Settings**
→ Select **Network & Internet**
→ Click on **Network and Sharing Center**
→ Click on **Change advanced sharing settings** to see different network profiles

→ Click on the drop-down arrow next to the **Public network profile** to view more options

Change sharing options for different network profiles

Windows creates a separate network profile for each network you use. You can choose specific options for each profile.

Home or Work _____

Public _____

Domain _____

→ Select the **Turn on network discovery** option

Public _____

Network discovery _____

When network discovery is on, this computer can see other network computers and devices and is visible to other network computers. [What is network discovery?](#)

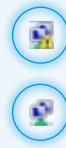
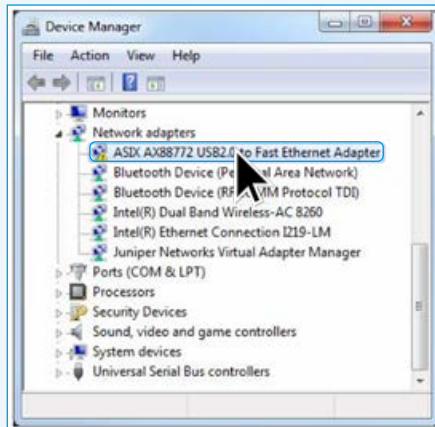
Turn on network discovery

Turn off network discovery

Adjusting your computer settings

From the **Control Panel**, click **Device Manager** to verify that your computer recognizes the USB or Ethernet adapter with the correct drivers.

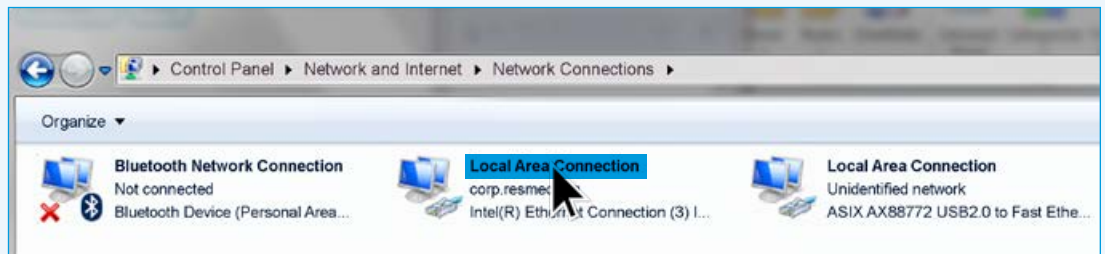
If it doesn't show up, contact your IT department or ResMed Technical Care at (888) AUTO-SET (288-6738) for assistance.



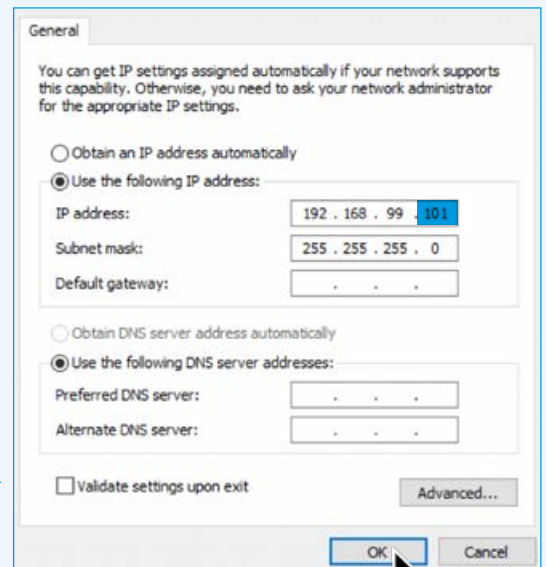
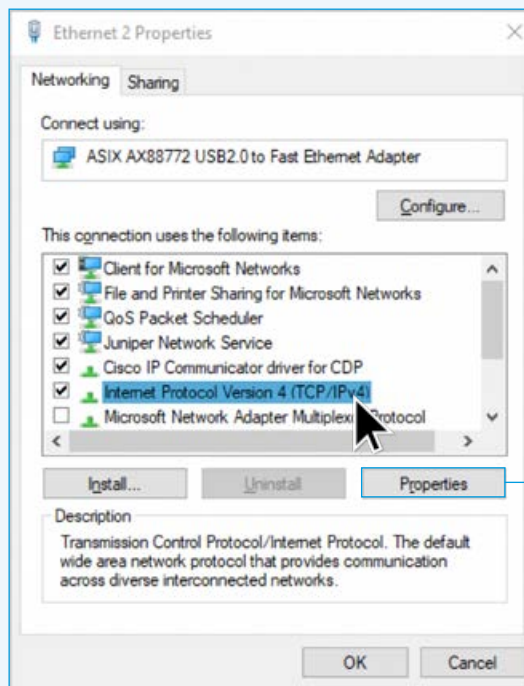
The blue/yellow icon indicates that the driver for this device is not recognized by Windows.

The blue/green icon indicates that the driver is correctly applied to that device.

- From the **Control Panel**
- Click on **Network and Sharing Center**
- Click on **Change adapter settings**
- The adapter connected to the TxLink should appear under **Local Area Connection**
- Right-click on the correct adapter (connected to your Tx Link)
- Select **Properties**



- Go to **Internet Protocol Version 4**
- Select the **Properties** button



- Set the IPv4 address of the Tx Link
- Click on **OK** to save your settings

Note: The preferred IP address is 192.168.99.XXXX. If this is the adapter controlling Bedroom 1, the IP address should be listed as 192.168.99.101 for standardization. In Bedroom 2, the IP address for this adapter should be listed as 192.168.99.102, etc.



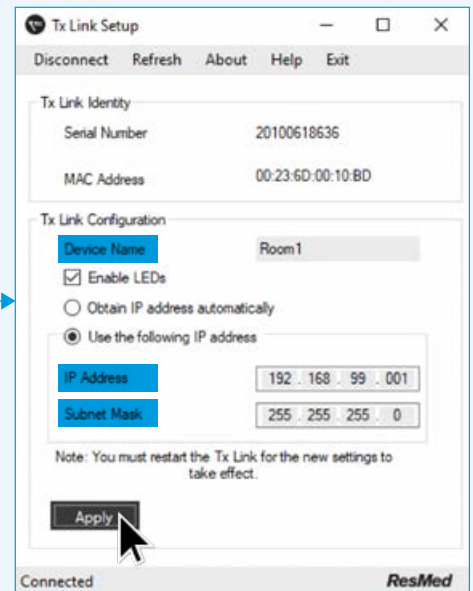
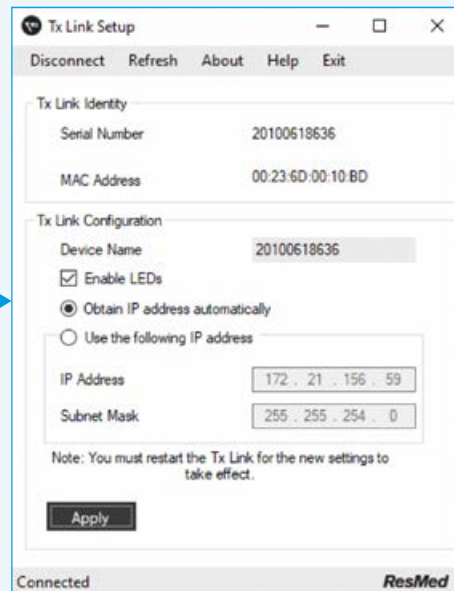
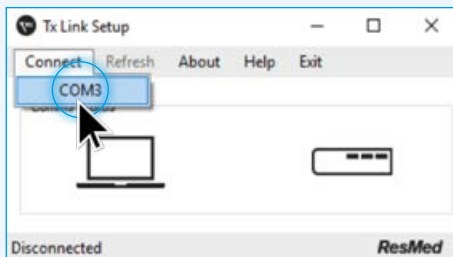
Configuring the Tx Link

Once you've set the Windows environment, you'll need to configure your new Tx Link with an IP address. Using only the power supply and a USB-to-Serial cable, connect the Tx Link to your PC. **DO NOT** plug any other cables in at this time.

Start the **ResMed Tx Link Setup** program
→ **COM3** is selected in this example

→ Click on **Connect** to access the correct COM port for your Tx Link

After a successful connection, update the **Device Name** and information highlighted here



Note: If you can't connect to the COM port, power cycle the TX Link and try connecting again. If it still doesn't work, contact your IT department or ResMed Technical Care at (888) AUTO-SET (288-6738) for assistance.

Examples:

Bedroom 1 Tx Link: 192.168.99.001 / 255.255.255.0
Bedroom 2 Tx Link: 192.168.99.002 / 255.255.255.0

Once you've finished making the requested changes

→ Click on **Apply** to set your changes

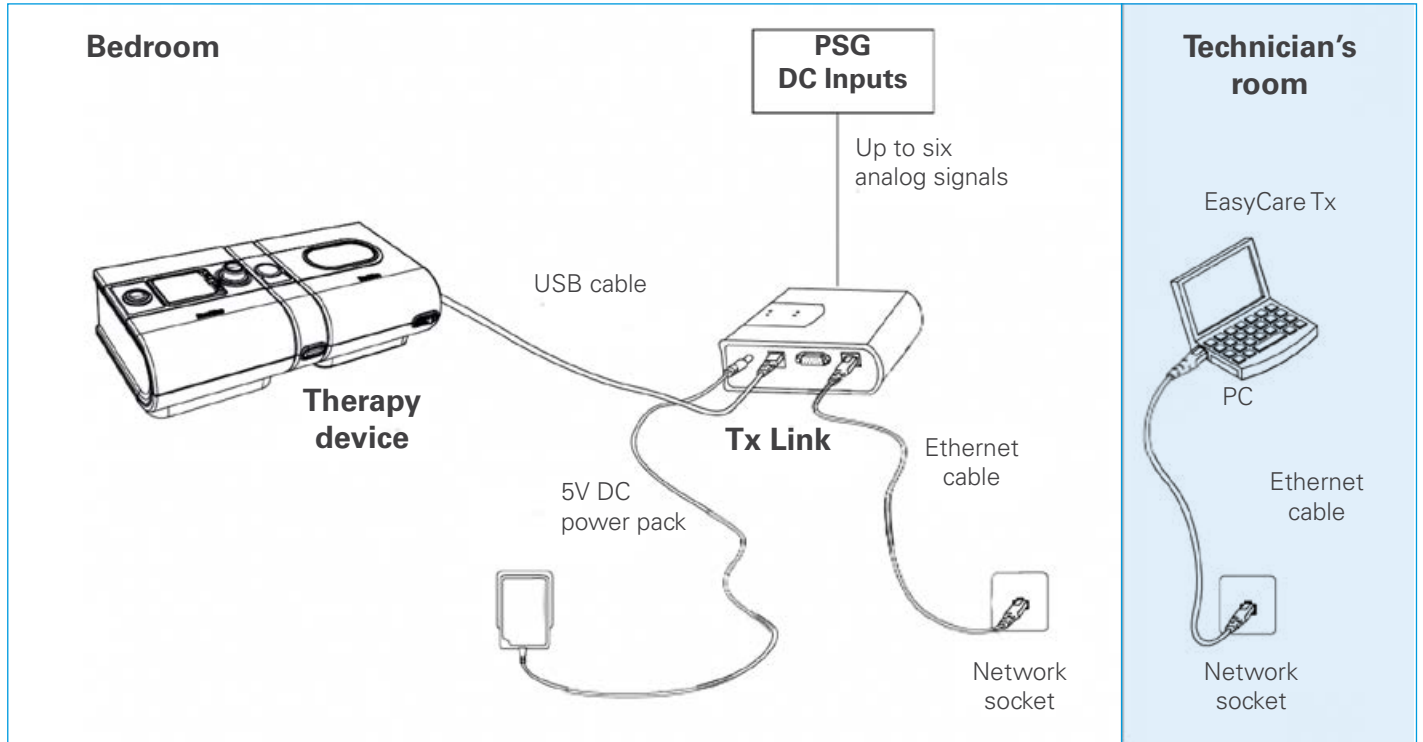
→ Reboot your Tx Link

Now you're ready to connect the flow generator.

Connect and Go

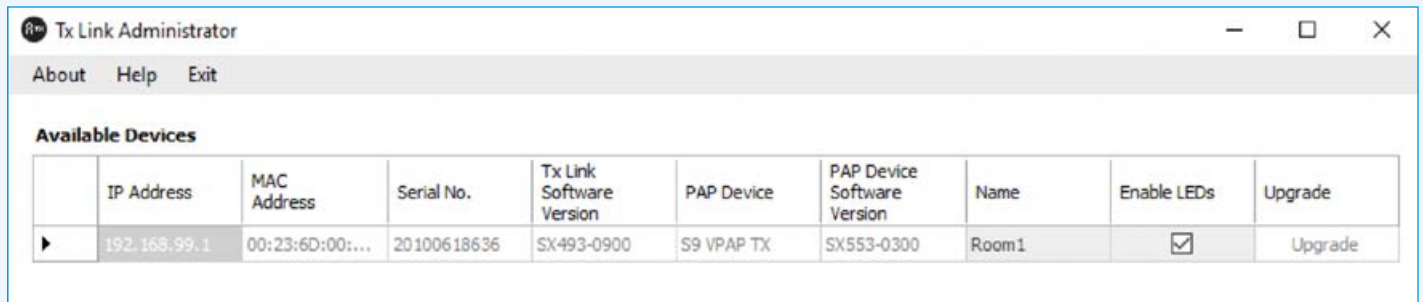
Connecting your devices

Once you've finished setting up your Tx Link, connect it as illustrated below.



Using Tx Link Administrator

If you have your Windows PC set up, and your connections are made, you should see your devices in the Tx Link Administrator application. Here's an example:



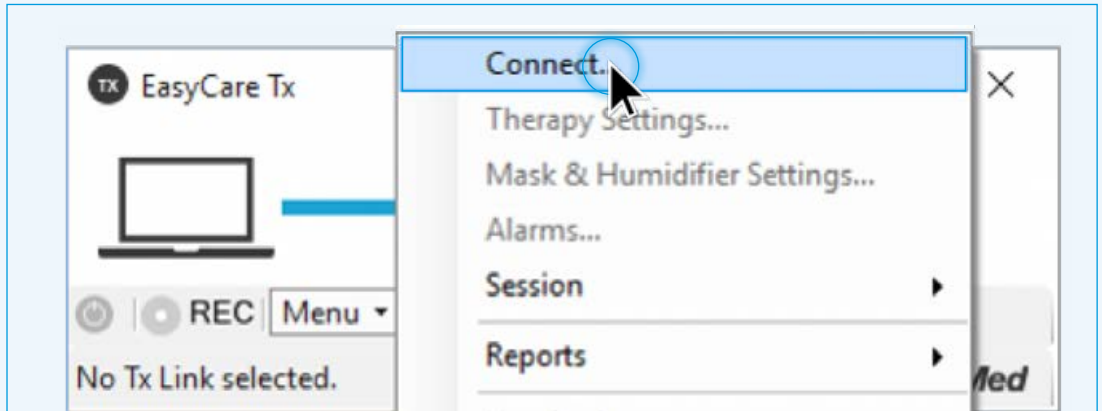
If there is a device missing from the **Available Devices** list, please check your cable connections and your Windows settings before rebooting.

Note: If your Tx Link Administrator shows a blinking Upgrade in the last column, click on Upgrade to have all the connected devices in that row use the same version of EasyCare Tx. It may help to disconnect the VPAP Tx before upgrading the Tx Link. Once the Tx Link is updated and rebooted, reconnect it and power-on the VPAP Tx to see if the Upgrade button is activated. If so, Upgrade the VPAP Tx as needed.

Using EasyCare Tx

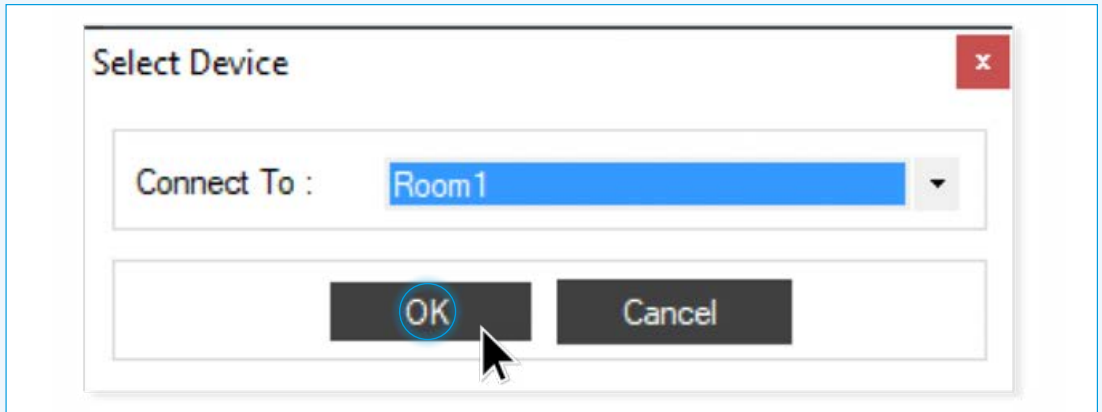
Log in to the EasyCare Tx application on your PC using your Windows credentials

- Click on **Menu**
- Select **Connect**
- Use the drop-down arrow to find the Tx Link of your choice (if you have multiple)

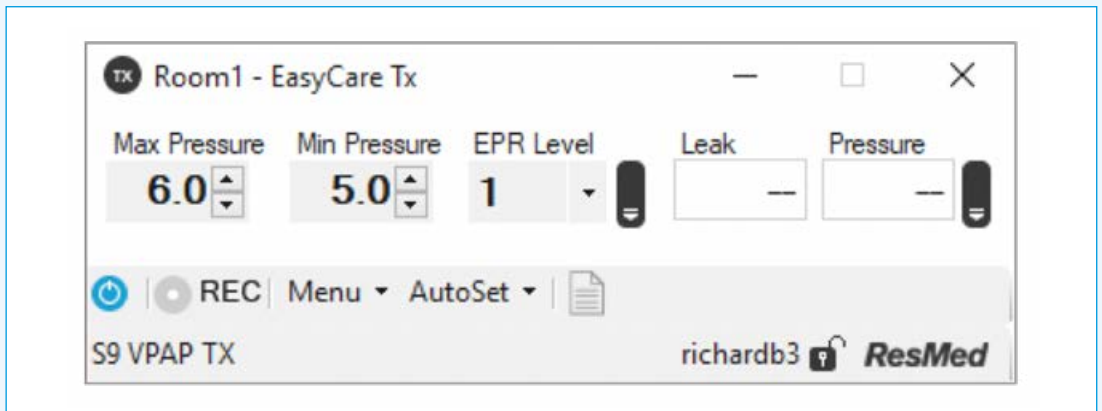


Once you have selected your Tx Link

- Click on **OK** to continue



You should now be able to control your flow generator remotely.



Need more help?

Consult your IT department or ResMed Technical Care at (888) AUTO-SET (288-6738) for assistance.